

# **Division of HIV & STD Program (DHSP)**

## **Sexually Transmitted Disease Student Orientation**

**Liliyan Honarchian MSN,PHN,RN  
Public Health Nursing Supervisor**



# Learning Objectives

At the conclusion of the presentation, students will be able to:

1. State (2) examples of safer and responsible sexual behaviors.
2. Identify at least (1) reason why the reporting of STDs is important.
3. List (2) roles of the Program PHNs in STD nursing intervention.



# About The DHSP-STD Program

- Prevention and control of sexually transmitted diseases in the communities of Los Angeles County
- Our vision, which coincides with Healthy People 2020, is for LA County residents to practice safe and responsible sexual behavior.



# What is safer and responsible sexual behavior?



# STD Core Program Activities

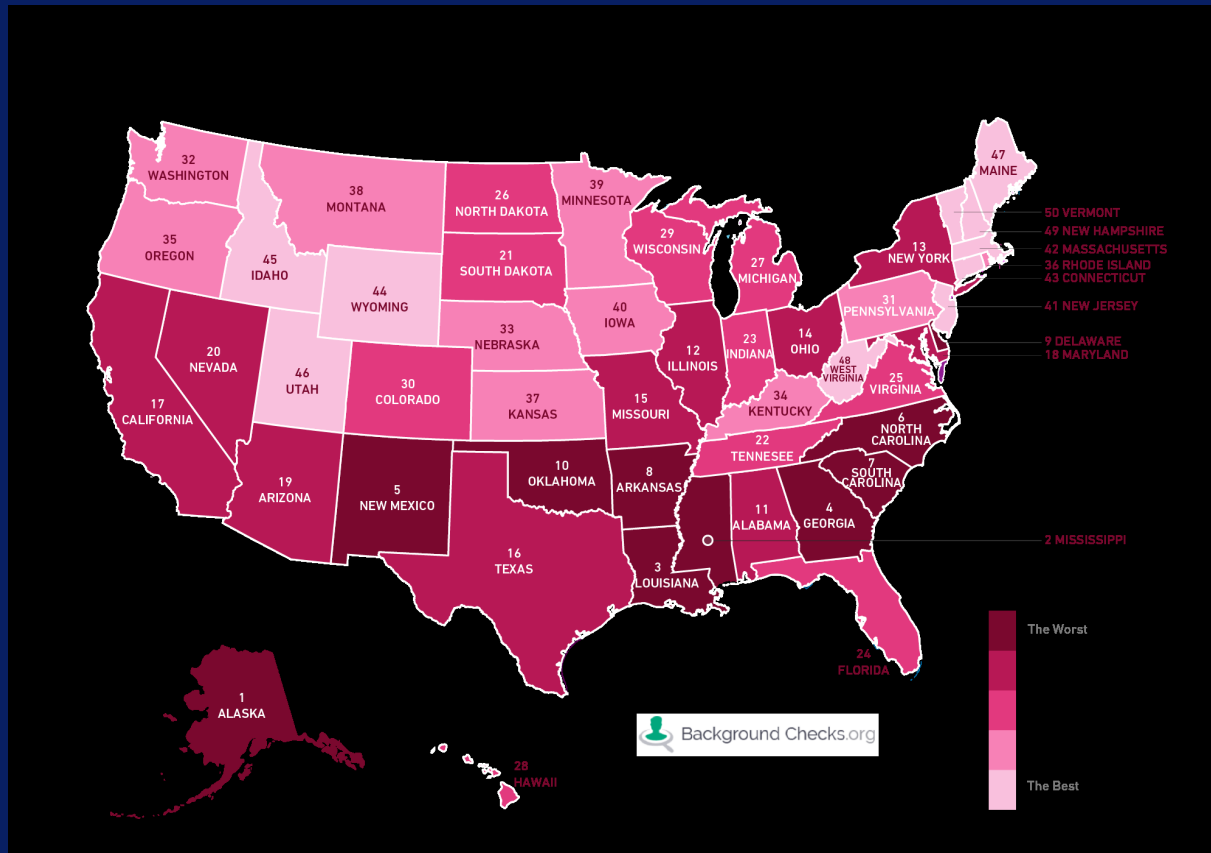
**Surveillance:** The epidemiological surveillance of sexually transmitted diseases in Los Angeles County.

**Research:** The Implementation of research projects to inform the design of programs and policies and evaluate their effectiveness in the community.

**Programs:** The development and implementation of programs to promote safer sexual behaviors in populations at risk, in collaboration with community partners.

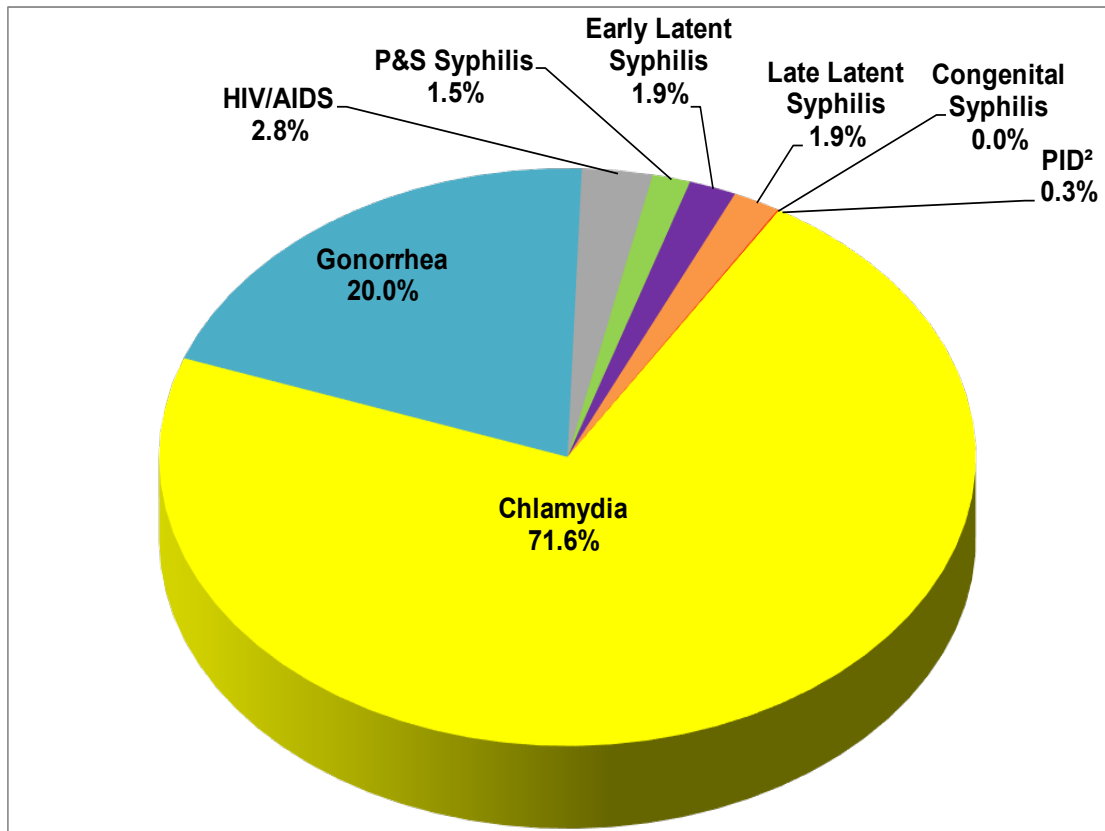


# Most Current Statistical Data of STDs





# Reported STD and HIV/AIDS Cases Los Angeles County, 2014<sup>1</sup>



**A total of 72,769 STD and HIV/AIDS cases were reported in LAC in 2014:**

- **71.6% Chlamydia**
- **20.0% Gonorrhea**
- **5.3% Syphilis**
- **2.8% HIV/AIDS**

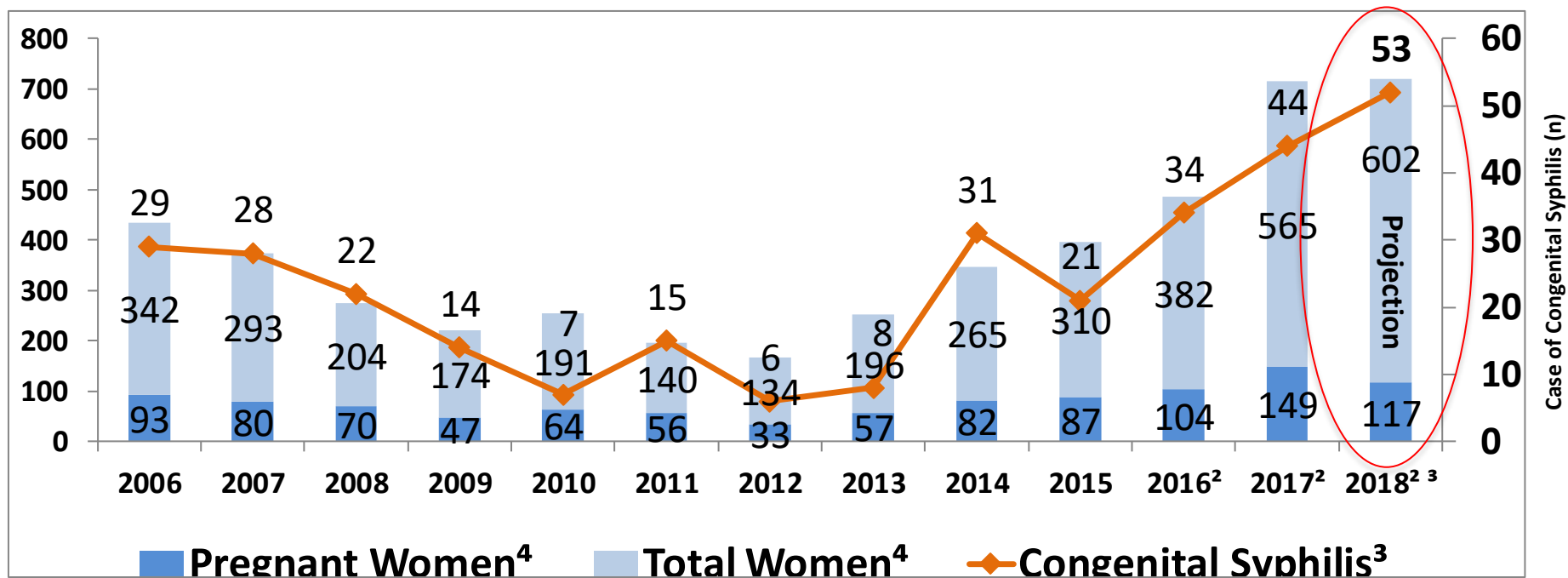
1. Data are provisional due to reporting delay. Chlamydia, Gonorrhea, Syphilis, and PID exclude cases in the cities of Long Beach and Pasadena.

2. Pelvic Inflammatory Disease (PID) includes Chlamydia, Non-Chlamydia, Gonococcal, and Non-Gonococcal.





# Number of Female Syphilis Cases & Congenital Syphilis Cases Los Angeles County, 2006-2018<sup>1</sup>



<sup>1</sup> Data are from STD Casewatch as of 07/17/2018 and excludes cases from Long Beach and Pasadena

<sup>2</sup> 2016-2018 data are provisional due to reporting delay. 2018 projections are based on provisional data. As of 7/31/18, 26 congenital syphilis cases have been reported.

<sup>3</sup> Congenital Syphilis includes syphilitic stillbirths

<sup>4</sup> Syphilis among females of childbearing age (ages 15-44) including all cases staged as primary, secondary, early latent and late latent

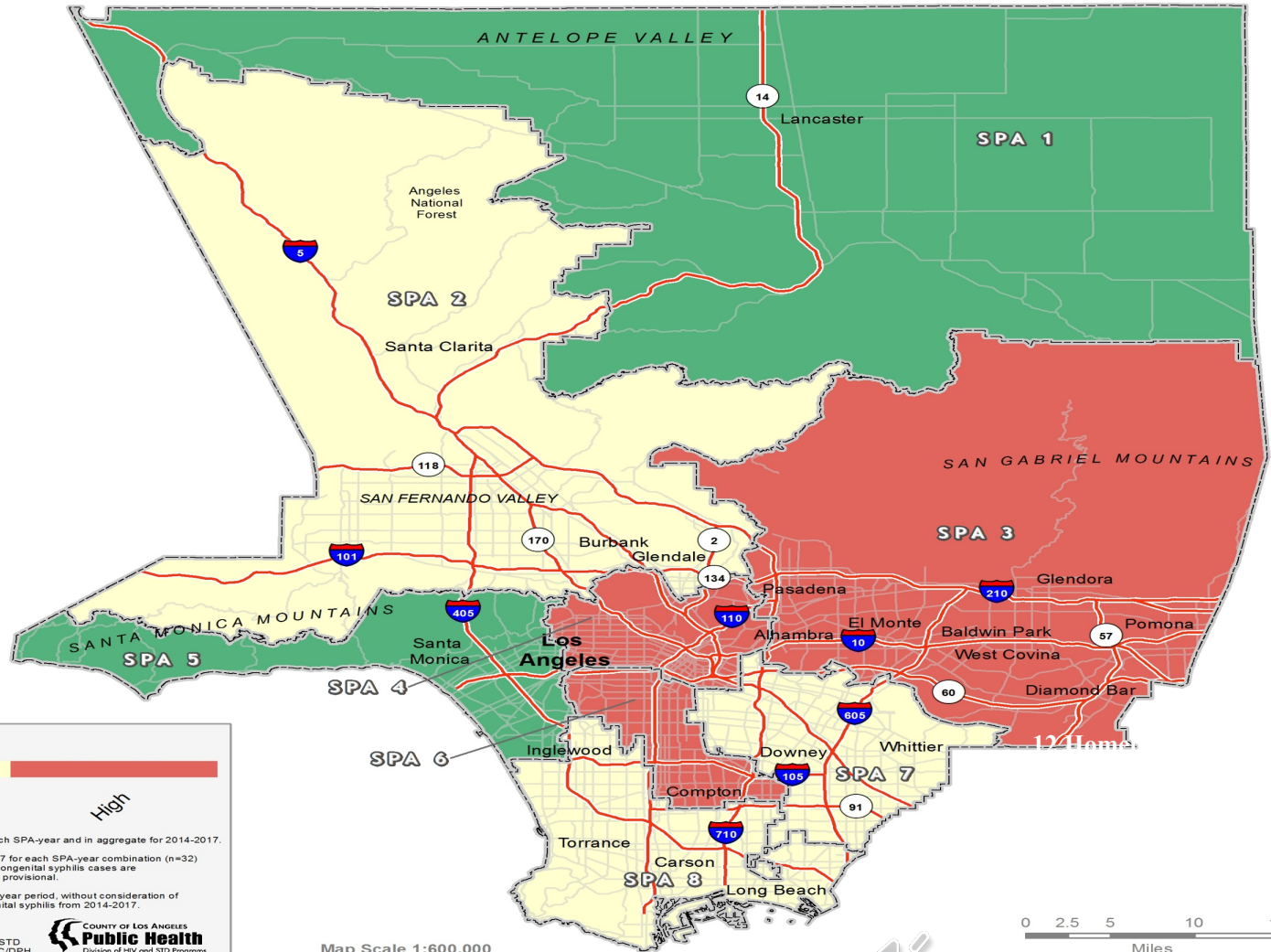
Source: Division of HIV and STD Programs







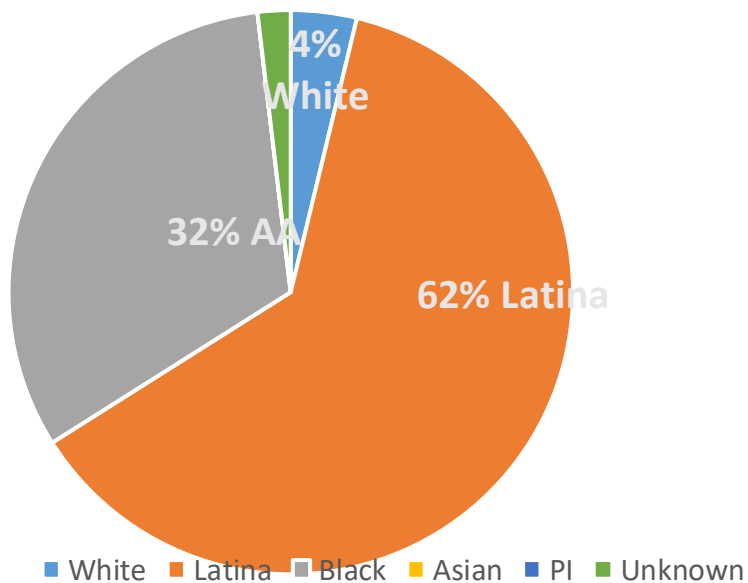
Revised: 01/16/2018



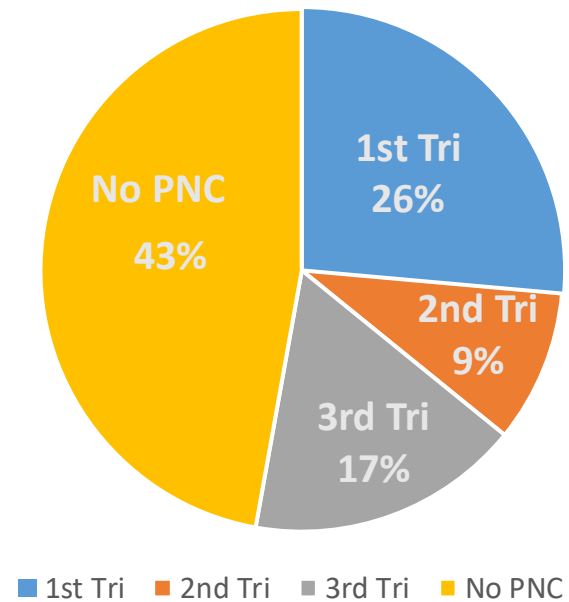
# 2018 Maternal Characteristics (n=53)

## Median Age: 29.2 years (range 16-38)

Race/Ethnicity

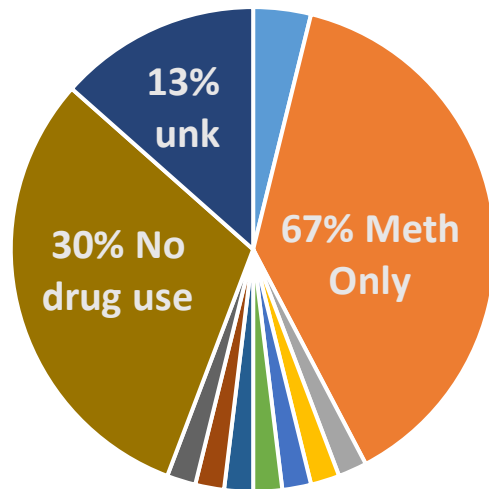


Entry into PNC



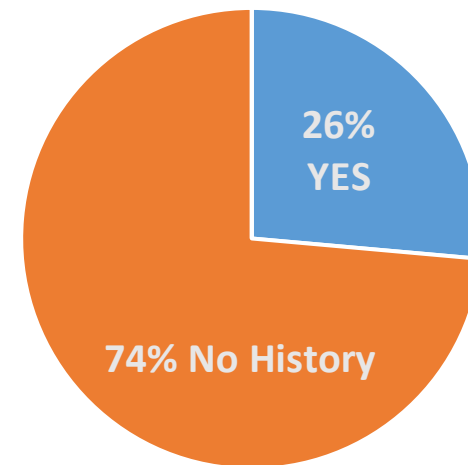
# 2018 Maternal Characteristics (n=53)

Drug Use During Pregnancy



- Meth+ opiates-heroin(7%)
- Meth Only+(67%)
- Meth+MJ(7%)
- Cocaine Only(3%)
- Cocaine + MJ(3%)
- MJ Only(3%)
- Ecstasy(3%)
- Yes, type unk(3%)
- No Drug use
- Unknown

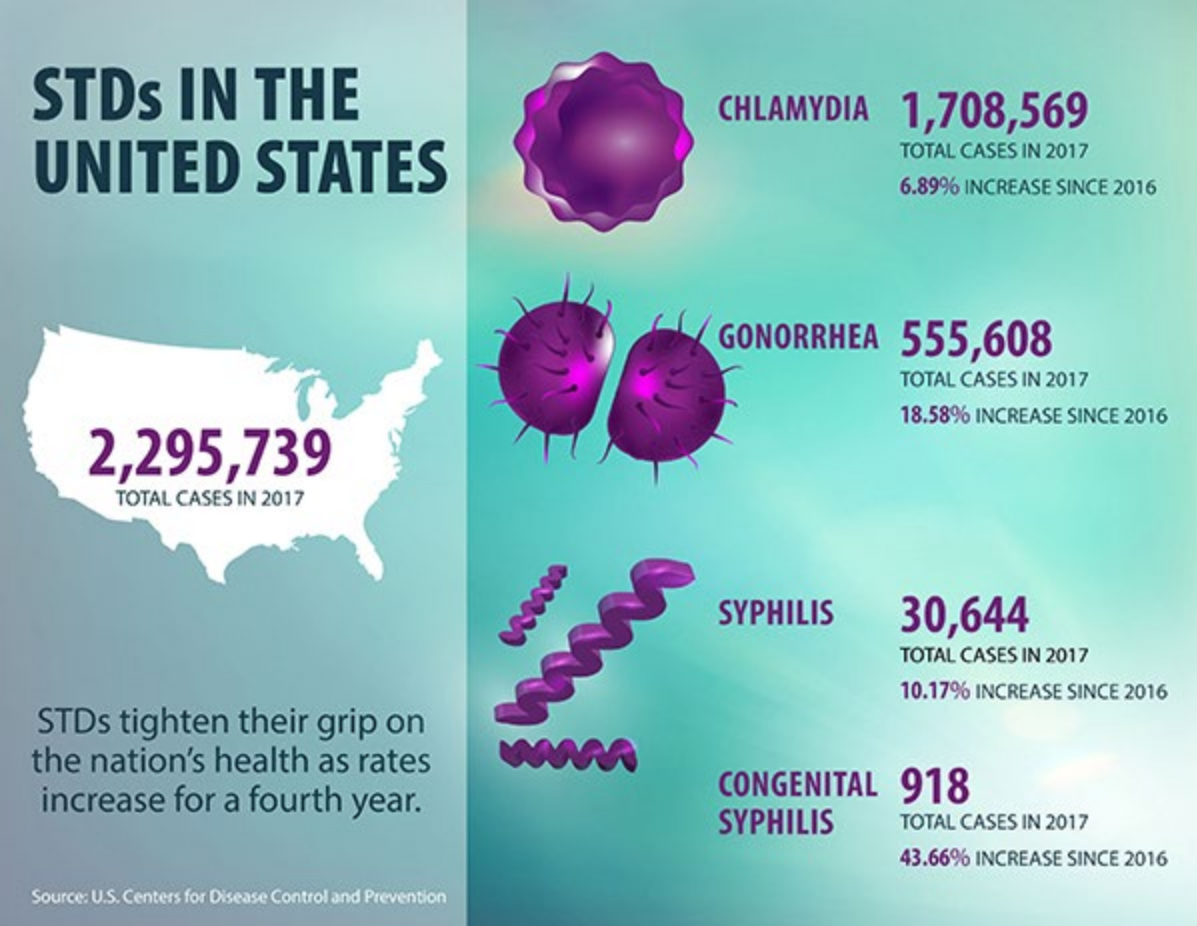
History of Incarceration/Arrest



- YES
- NO



# STD Reporting



# Reportable Diseases as Mandated by California State Law

- Chlamydia
- Chancroid
- Gonorrhea
- Pelvic Inflammatory Disease
- Syphilis



# State Mandate On Persons Required to Report STDs

- Medical Doctors (MDs) and Osteopaths (Dos)
- Coroners
- Veterinarians
- Podiatrists
- Dentists
- Nurse Practitioners
- Infection Control Practitioners
- Health Facility/School Administrators
- Anyone else knowing of or suspecting a case of a communicable disease.

The image shows a 'Mandatory Reporting Disease - Confidential Report Form' from the County of Los Angeles Public Health. The form is tilted and contains various fields for reporting a communicable disease. It includes sections for 'Patient Information', 'Provider Information', and a list of reportable diseases with checkboxes for 'Reported' and 'Not Reported'. The form also has a 'Public Health' logo in the top right corner.



# STD Confidential Morbidity Report (CMR)

- Tool used by providers to report STD lab & treatment
- STD Purpose
  - To determine the extent of STD morbidity in L.A. County
  - To evaluate disease transmission risk
  - Provides a mechanism to target intervention activities



# DHSP/STD Nursing Unit





# Nursing Unit Highlights

- Consultation services to providers
- Laboratory and provider surveillance
- Field Delivered Therapy (FDT)
- Patient-Delivered Partner Therapy (PDPT)
- Monthly CME/CEU program for physicians & nurses
- Nursing and student orientation to public health



# Role of the STD Program Public Health Nurses

- Provide consultation and education to clinicians and other health care providers in the public and private sectors
- Provide record case searches and recommendations based on California State Regulations and CDC guidelines
- Educate laboratories and providers of their mandated disease reporting through provider and laboratory field visits
- Other roles
  - participate in research/surveys
  - mobilize community partnerships
  - provide data to local, state, & federal orgs



# Role of the STD Program PHNs....cont.

- Surveillance on laboratory reports (all positive STDs) and confidential morbidity reports from public and private providers
- Educate and refer nursing priority cases to the district public health nurses (DPHNs) for case management
- Provide quality assurance and review of all referrals completed by DPHNs for appropriateness of care & accuracy of STD Casewatch® database entries
- Coordinate STD interventions with other SPA staff i.e. MDs and Public Health Investigators (PHI)



# DHSP/STD

- General Number: (213)368-7441
- Fax: (213)749-9621
- Nursing Line: (213)744-3106
- Hotline: (800)758-0880
- Internet: [www.publichealth.lacounty.gov/dhsp](http://www.publichealth.lacounty.gov/dhsp)
- Intranet (from PHD) Organization, Alphabetical listing, Public Health, STD Program



Hi, honey. What did you do at school today?



Oh, today I humped Sally. Then Sally humped Ed. Then Ed and Sally humped Rick. Rick humped me...

THE  
MILKBONE  
DIET

It takes teamwork to exterminate the “love bugs” in Los Angeles County...

